

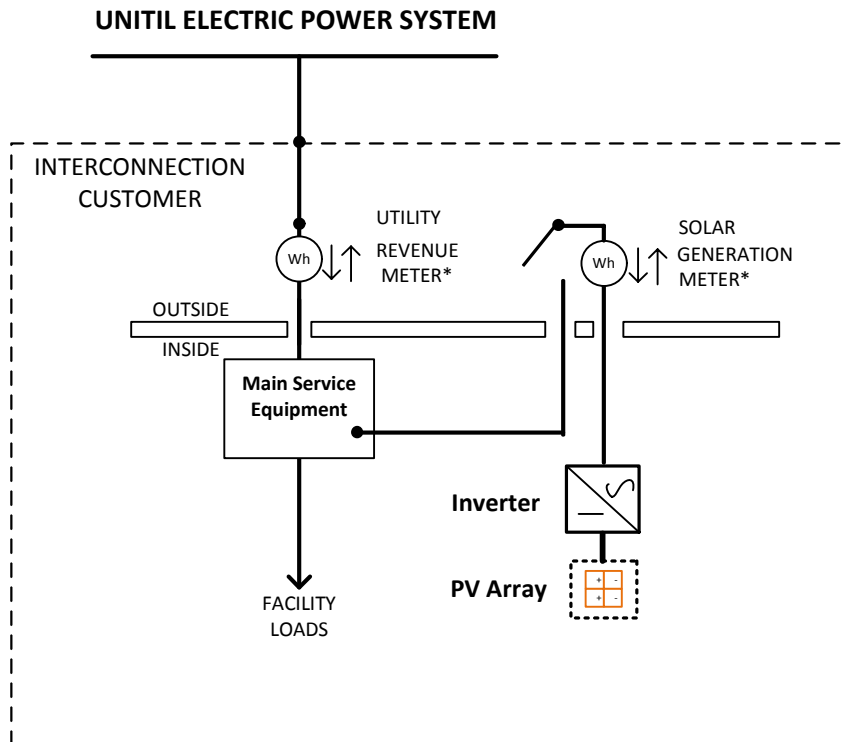
Solar Massachusetts Renewable Target ("SMART") Program
Metering Configurations

The drawings included in this document are guidelines for metering configurations related to the MA-SMART program. The guidelines depict typical metering configurations with the understanding that all system designs will be reviewed and inspected by Unitil personnel prior to approval. Consideration for meter configurations include:

1. Revenue and generation meters will be Unitil owned, bi-directional, watt-hour meters.
2. Unitil owned meters will be installed, removed, and changed by authorized Unitil personnel or approved contractors.
3. Meter location and installation shall be according to Unitil's jurisdiction applicable service and tariff requirements.
4. Unless located in an approved electrical utility room, existing revenue meter that are located inside, will require the service connection be upgraded so both the revenue and production meter are located outside.
5. Revenue and production meters will be located in close proximity of each other. Any exceptions will require preapproval from Unitil.
6. Meter sockets up to 400 amps will be provided by the customer.
7. Meter installations rated greater than 400 amps will require transformer rated metering.
8. For inverters with AC ratings > 60 kW, both revenue and production watt-hour meters are capable of recording interval readings. These applications require telemetering be available.
9. Generator disconnect switch is to be installed in accordance with NEC and Unitil's interconnection requirements.
10. Inverter outputs will be wired to the bottom of the generation meter socket.

Behind the Meter Solar

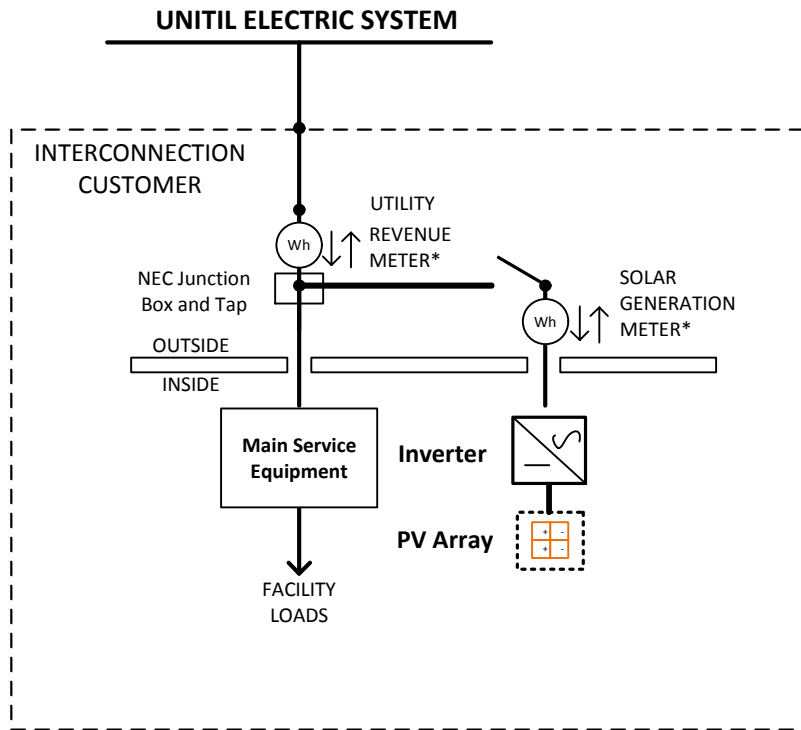
This diagram is representative of a typical system design. All system configurations must be approved by Unitil.



* Transformer rated metering is require for ratings > 400 amps

Behind the Meter Solar Alternative Connection

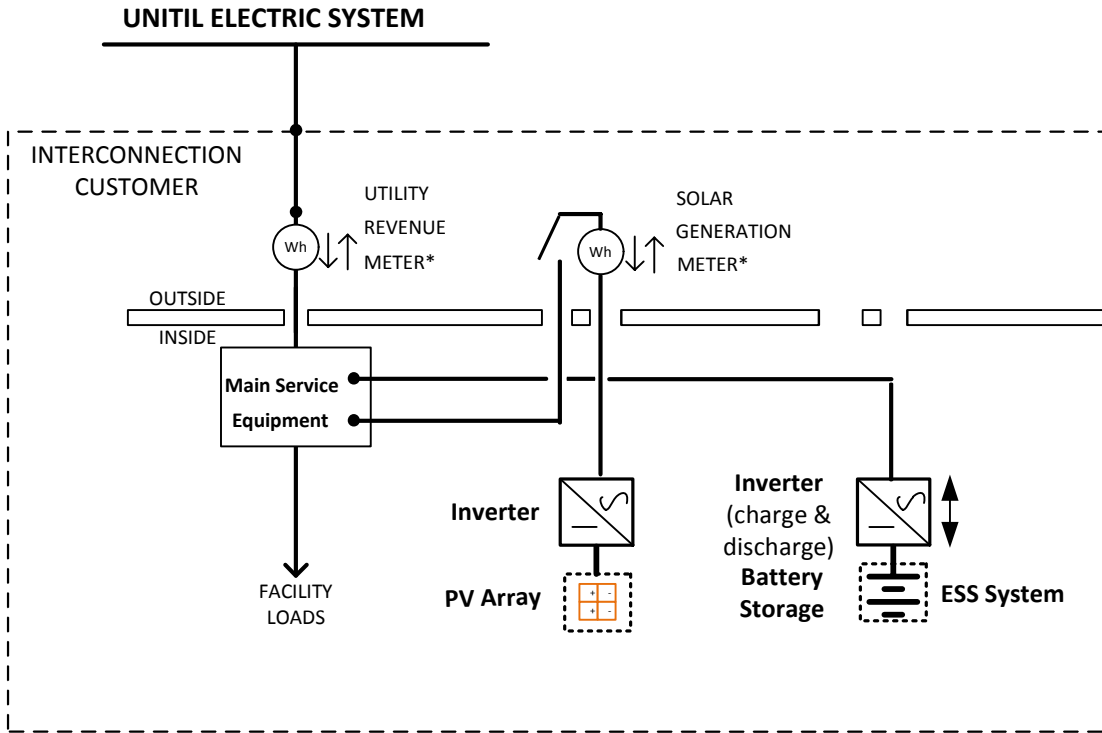
This diagram is representative of a typical system design. All system configurations must be approved by Unitil.



* Transformer rated metering is require for ratings > 400 amps

Behind the Meter Solar AC Coupled with Storage <= 60 kW

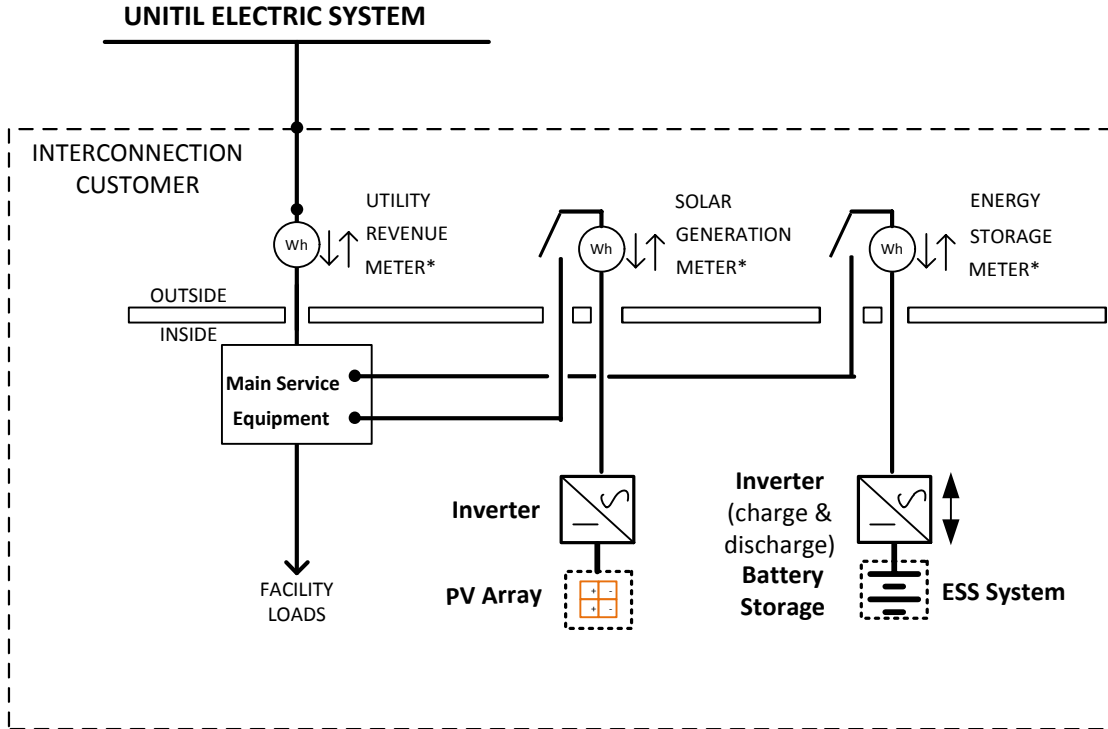
This diagram is representative of a typical system design. All system configurations must be approved by Unitil.



* Transformer rated metering is require for ratings > 400 amps

**Behind the Meter Solar AC Coupled with Storage <= 60 kW
w/storage registered with ISO NE**

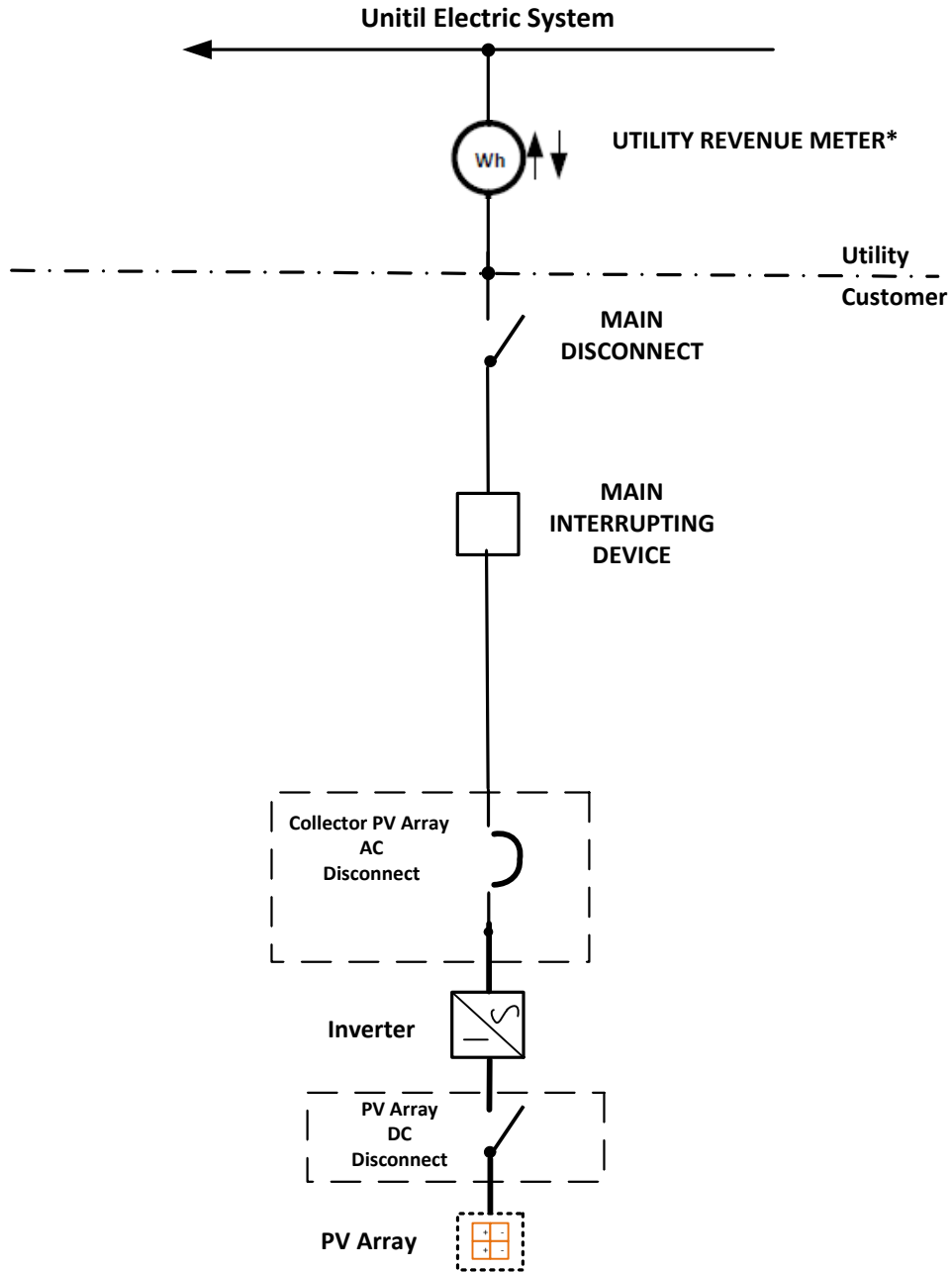
This diagram is representative of a typical system design. All system configurations must be approved by Unitil.



* Transformer rated metering is required for ratings > 400 amps

Stand Alone Solar

This diagram is representative of a typical system design. All system configurations must be approved by Unitil.



* Transformer rated metering is require for ratings > 400 amps

